

PROYECTOS
PROJECTS



ALTIUS

FORWARDING

ADUANAS
CUSTOMS

YOUR MOST FLEXIBLE AND RELIABLE PARTNER IN YOUR SUPPLY CHAIN

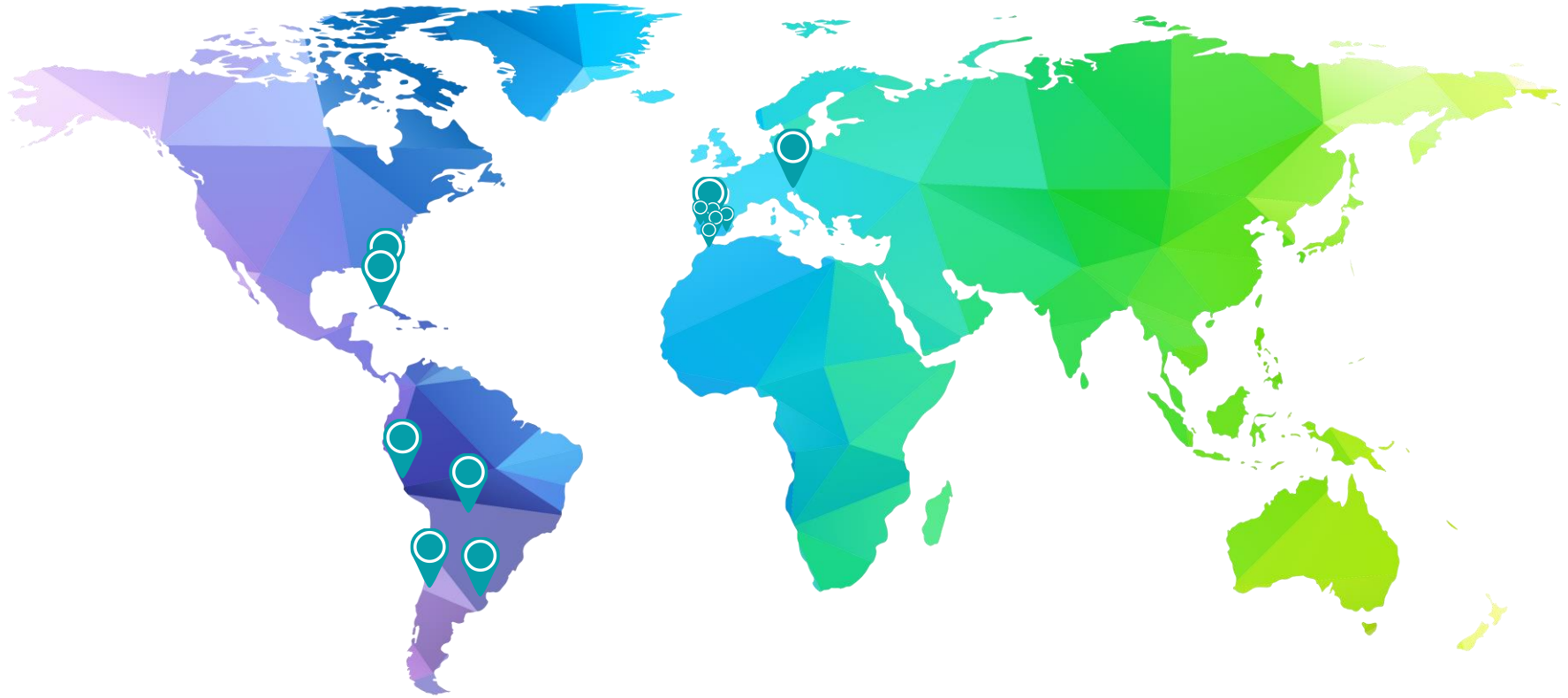
HISTORY

Your most flexible and reliable partner in your supply chain.



- Altius belongs to the Davila Group which was established in 1917.
- We are a 100% Spanish Company, with GLOBAL scope and LOCAL ACTION philosophy.
- We provide FLEXIBILITY, CREATIVITY and RELIABILITY in the wide range of services we offer, as well as the convenience of belonging to the established, financially sound Davila Group.
- Today Altius S.A. focuses primarily on meeting all of their customers' needs in the Supply Chain, aiming to reduce costs and create models of efficiency and measurable productivity schemes for them.

ALTIUS WORLDWIDE



ALGECIRAS → BARCELONA → BILBAO → LEÓN → GIJÓN → MADRID → SEVILLA → VALENCIA → VIGO → ZARAGOZA → UDINE (ITALIA)
LIMA (PERÚ) → SANTA CRUZ DE LA SIERRA (BOLIVIA) → BUENOS AIRES (ARGENTINA) → SANTIAGO DE CHILE (CHILE) → LA HABANA
(CUBA) → MIAMI (EE.UU.)

* Members of the World Cargo Alliance, Logistics Network and Perishable Logistics Specialists Network offering worldwide services.

ALTIUS SPAIN



ALGECIRAS → BARCELONA → BILBAO → LEON → GIJON → MADRID → SEVILLA → VALENCIA → VIGO → ZARAGOZA

BUSINESS UNITS

Totally adapted to your needs and expectations coupled with ongoing expansion.



FORWARDING

- We specialize in design and implementation of tailor-made solutions for your supply chain.
- In the Forwarding Division we offer international transport by sea, land and air, supported by logistics and warehousing services.
- In addition, we offer our customers a specialized service on insurance management.

CUSTOMS BROKERAGE

- We have been customs agents since 1914, constantly innovating and always adapting to an ever-changing European legislation.
- AEO (Authorized Economic Operator).
- Present in all main spanish ports and airports.
- Processing of all required customs documents for import and export of goods.

PROJECT CARGO

- A team of experienced specialists in the transport of all kinds of cargo is entirely dedicated to finding innovative solutions to transport your project cargo.
- An engineering department guarantees the correct execution of the most complex operations.

FORWARDING



FORWARDING

Airfreight

As our customers' partners in airfreight operations, our main objectives are efficiency, on time commitment and safe delivery.

- IATA agents.
- Charters.
- Hand Carrier.
- Express services, emergencies.
- Supplier's delay management.
- 24/7
- Fresh fish, seafood and fruit transport specialists.
- Animal transport.

Services



SPECIALISTS

LIVE ANIMALS:

- Sea lions, falcons, horses, bulls, dolphins, penguins, etcetera. Staff accredited by IATA in handling, documentation, custom clearance and transport of live animals for zoos, aquariums and natural parks.



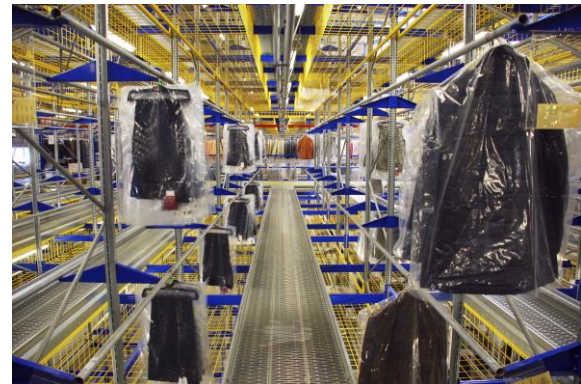
FOOD:

- Experts in food supply chain. Specific transport solutions for fresh fruit, frozen and live seafood with temperature control traceability.



TEXTILE:

- Production control and delivery guarantees from providers in China, Turkey and India. Specific rates with guaranteed space for big volume cargo. Real visibility of the whole process supported by dedicated stuff.



SPECIALISTS

HIGH TECH:

- Specialized presence in the main production centers (SZX). Supporting the obtention of the export licenses and commitment on direct flights.
- Supervision, control and maximum security management in the custody of the goods.



AUTOMOTIVE:

- Launching new projects (vehicles, spare parts, molds, etc.) and helping to implement new and innovative eco-friendly technologies (hybrid and electric motors).
- Implements agreements into the main manufacturers (Renault, Ford, Volvo, Jaguar, Seat) and parts industry (Faurecia, TRW, Grupo Antolin, Denso, Bosch).



FORWARDING

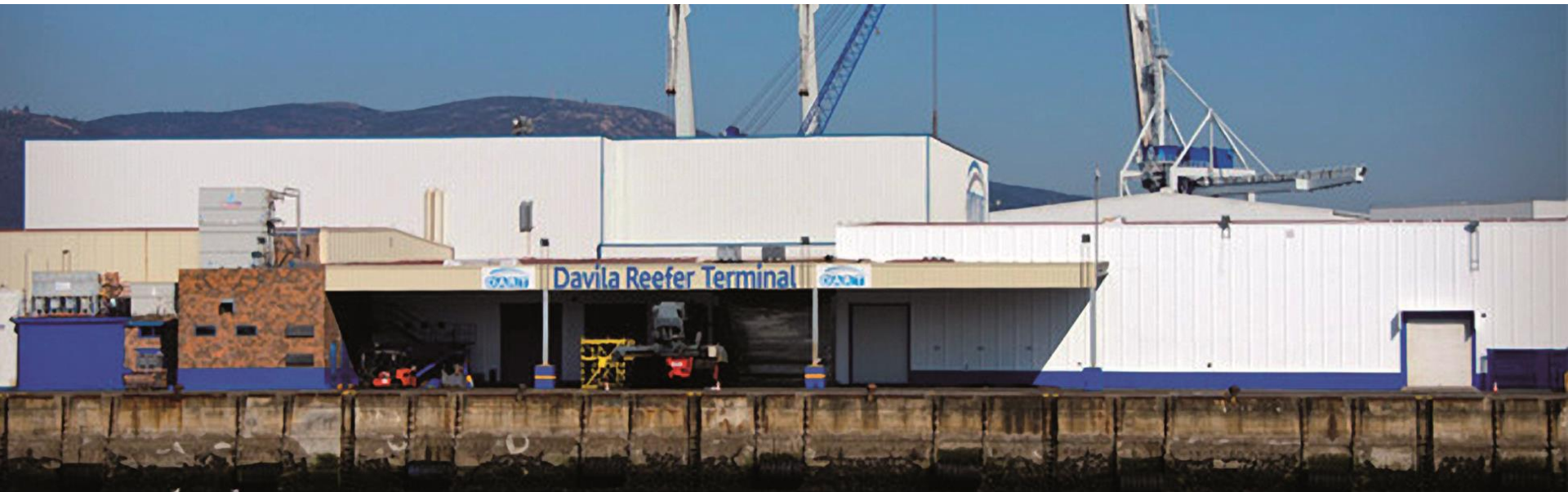
Seafreight

We have a team of specialists, with many years of experience in the industry, whose main goal is adapt to the ever changing market needs and offer our clients the best operational solutions.



Services

- FCL and LCL; experts in transport to Asia: Import / Export in Central America, the Caribbean, South America, Mexico, USA, Canada, the Canary Islands, the Maghreb and north of Europe.
- We specialize in Perishable and Frozen goods . We offer the best solution to your sea freight exports based on temperature control at destination.
- Vendors Management.
- Orders Management, to maintain our customers' nomenclature.
- Freight Management, to control and manage customer contracts with shipping lines.
- We manage direct contracts with shipping lines on behalf of our customers.
- Port Services: warehousing, cross-docking.
- We offer professional consultancy in the supply chain for optimization, improvement of lead times and cost reduction.
- We specialize in exotic countries like Russia and countries which are members of CIS like Tajikistan, Uzbekistan and also Iran, Irak and Afghanistan among others.
- Cold warehousing in Marín (Vigo), with specialized teams dedicated to handling fruit and vegetables.



FORWARDING

Road Transport

Our flexibility and experience allow us to :

- Offer any type of existing vehicle to transport your goods, including special transport.
- Adapt transit times and transportation costs according to your needs.
- Get your goods to the furthest or most inaccessible place in Europe and Asia with every guarantee.
- Support your efforts to protect the environment by offering the least contaminating combined transport possible depending on the destination.

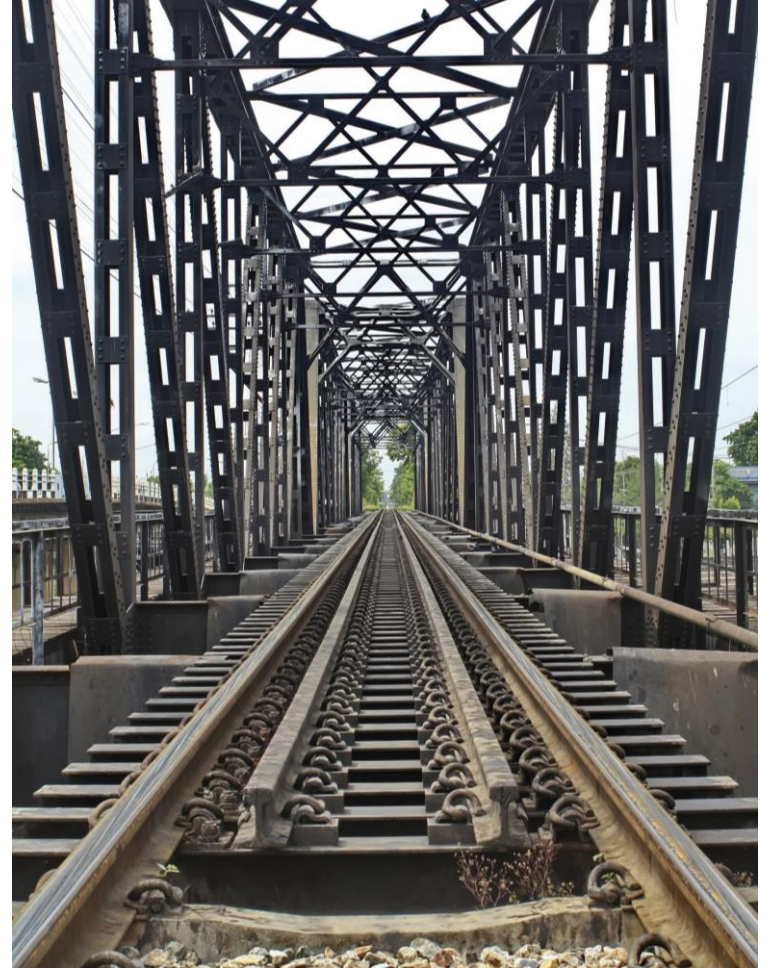


FORWARDING

Road Transport

Based on our PARTNERS whom we continuously and strictly supervise:

- We offer transport to and from anywhere in Europe and parts of Asia:
- Consolidation loads (up to 2,500 kg)
- LTL Service (from 2,500 kg)
- Full truck loads
- Express transport with specialized vehicles
- Transportation of special cargo (over height or overweight)
- We specialize in cargo bound for Eastern Europe and Eurasia where we offer through a STRATEGIC NETWORK OF AGENTS with offices in most countries, a personalized treatment and the best solutions to our customers' needs.
- ALTIUS-PHARMA SERVICES: LTL and FTL services to all of Europe, with temperature control services and under GDP conditions.



LOGISTICS AND WAREHOUSING

- Cross-docking.
- Bond warehouse, DDA, ADT.
- Deferred warehousing.
- 24 hour national distribution.
- Specialized logistics for retailers.
- Flexibility in decision making.
- KPI's management.

INSURANCE

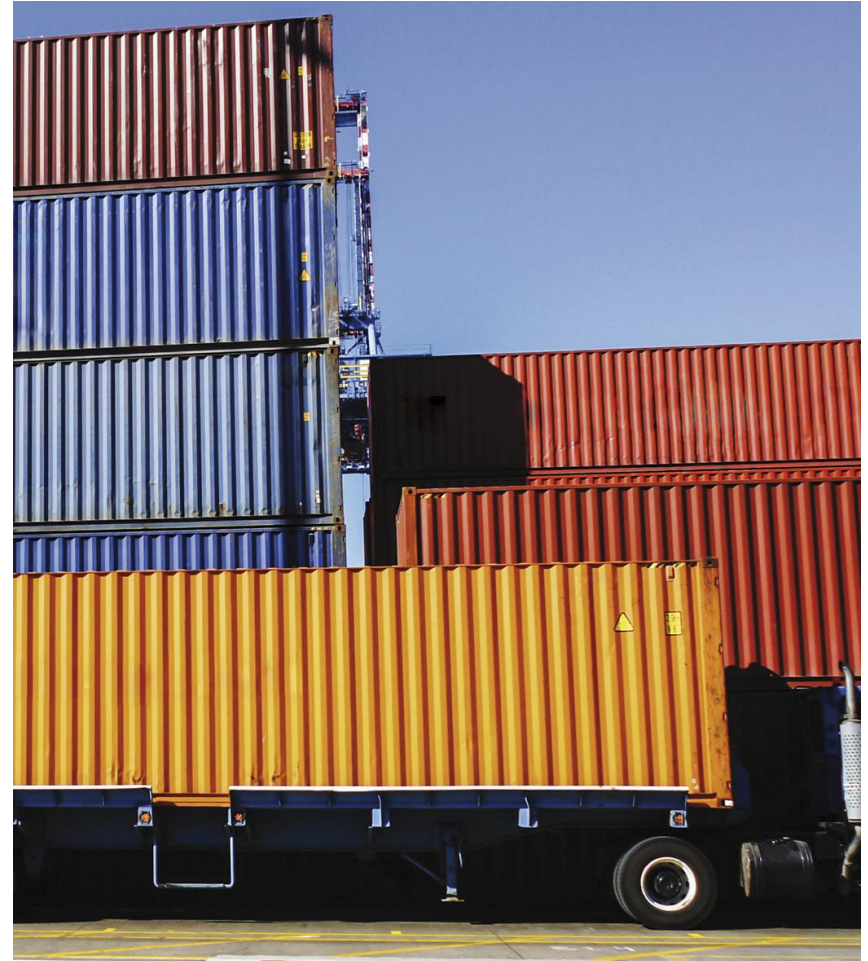
- We specialize on insurance brokerage, international transport and foreign trade and are experienced in the proper management and claims assistance for our customers.
- We search for the best coverage of transport flows for our customers at the most competitive prices, with special emphasis on operations with high value goods as well as complex and delicate industrial project operations.



ALTIUS CHINA SERVICES

Services we offer our clients who want to sell in China:

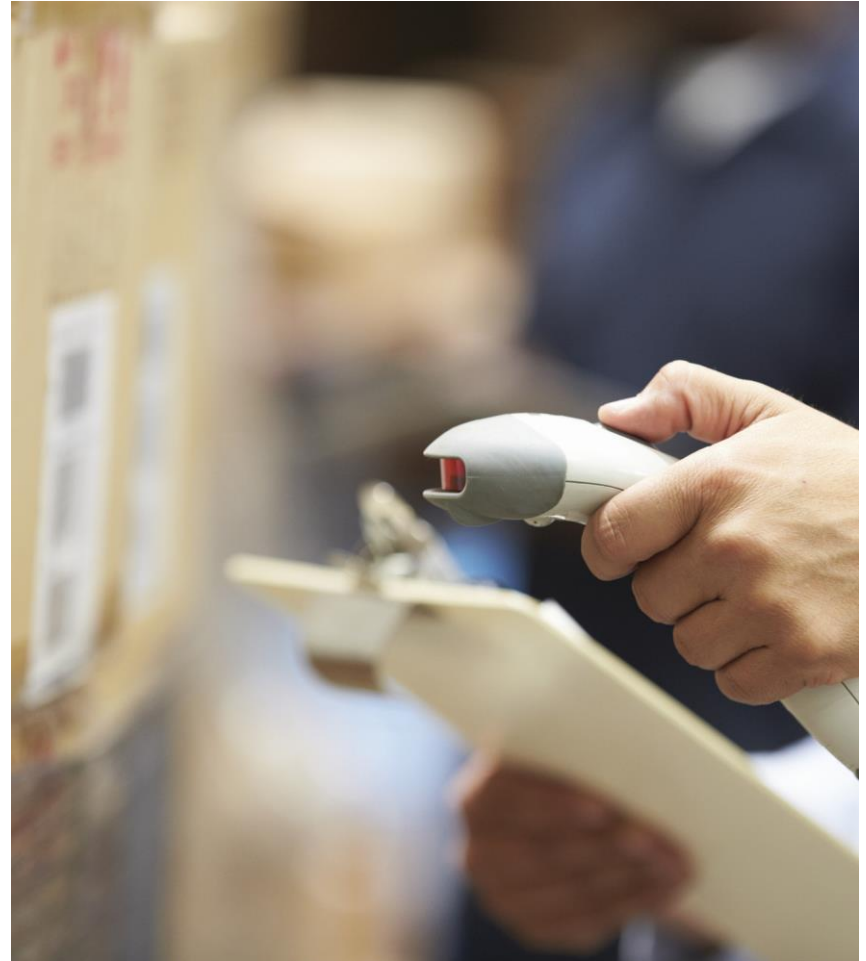
- Legal advice to incorporate companies.
- Import requirements consulting on different products.
- Import services to bring the product into China.
- Warehousing for stocking of products.
- Marketing consulting geared towards selling the product.
- Accountancy to deal with the local IRS.
- Secretarial services.
- Legal advice.
- Sales representatives for those customers who want them in China and Hong Kong at minimum cost.
- Helping customers to research the business by attending fairs in China.
- Market research for customers who want to know their product's market value in China



ALTIUS CHINA SERVICES

Services we offer our clients who want to purchase in China.

- Sourcing and pricing to better compare before ordering.
- Factory audit to make sure factory exists and is the target supplier with the right equipment to provide the right product before cashing out a single cent as a down payment.
- Professional service with a check point at each lead time from product development to raw material, production and shipment until the product is in our customer's warehouse.
- Professional consulting and laboratory testing to make sure the product will meet the norm and criteria at final destination.
- Raw Material Inspection (RMI), During Production Inspection (DPI), Out Going Quality Control (OGCQ), Pre-Shipment Inspection (PSI), Loading Supervision (LS) to make sure that product, packaging and loading meet our customer's requirements.
- Customer service to help customers tackle any claims. We offer legal advice to make sure product's specifications are achieved according to the contract.
- Representative office service for those customers who want to have purchase office in China at minimum cost.



INDUSTRIES

- Retail
- Fashion Retail
- Automotive
- FMCG
- Renewable energy
- Perishables: meat, fruit, fresh fish and frozen fish.
- Pharmaceutical industry
- Beverages



An aerial photograph of a coastal city and port. The city is on the left, with a dense urban area and a marina filled with boats. The port is on the right, with a large container yard filled with colorful shipping containers. A large ship is docked at the pier, and several cranes are visible. The water is a deep blue. A green semi-transparent circle is overlaid on the left side of the image, containing the text 'CUSTOMS BROKERAGE'.

CUSTOMS BROKERAGE

CUSTOMS BROKERAGE

AEO (Authorized Economic Operator).

Own agencies in major ports and airports in Spain.

Handling of all necessary customs documents at customs for the import and export of goods:

- Import, Export and Transit Customs Dispatch.
- Cargo entries and departures from customs bonded warehouses and TDW Temporary Deposit warehouse.
- Customs processing procedures :
- Active and passive improvement.
- Temporary import formalities.
- Special destinations.
- Handling of licenses and/or certificates before official entities.
- Intrastate.

Consultancy in foreign trade:

A team of professionals with extensive experience and training, which provide greater value to our services.

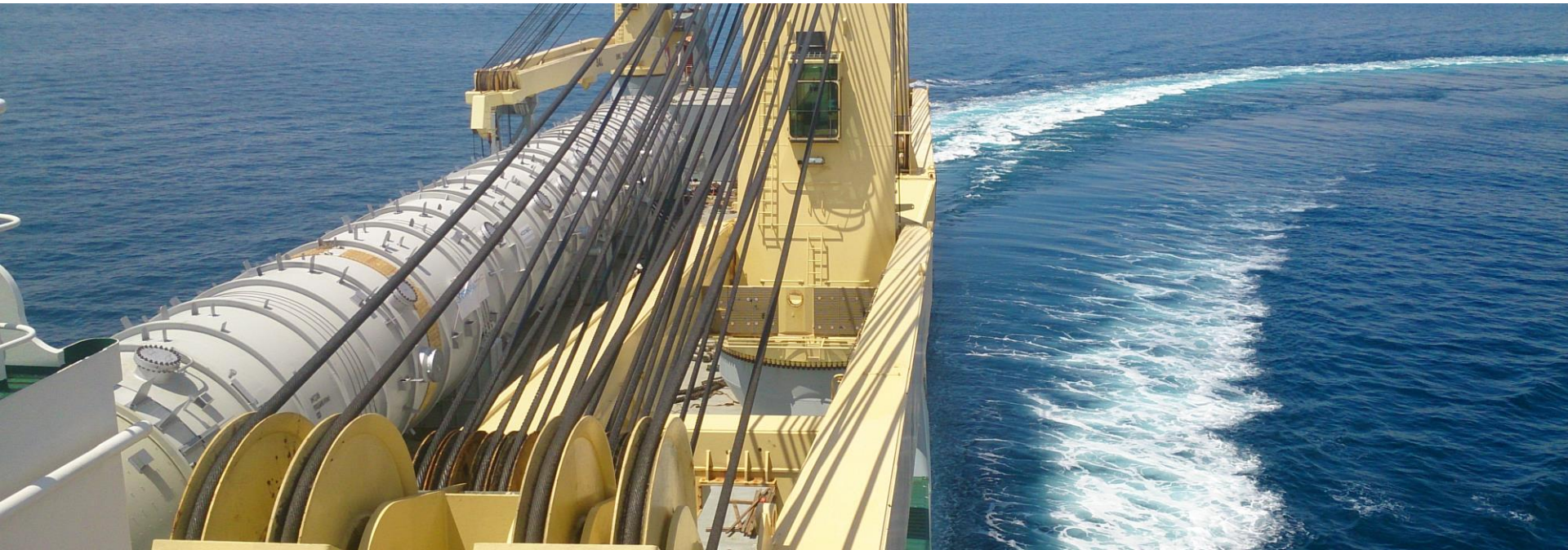
- Payment means: documentary credits, remittances, etc.
- VAT tax formalities : VAT exemptions or suspensions.
- Tariff Policy : sorting the goods in the right way, suspensions of excise duties, etc.
- On site assistance to physical inspections by customs or post clearance formalities.
- Handling of appeals, defense and disciplinary customs fines.
- Rating of goods at customs.
- Regulations on the origin of the goods.
- Regulations on labeling.
- Health and quality regulations.
- Binding excise duties consultancy.
- Quota management.

PROJECT CARGO



PROJECT CARGO

- The Project Division is made up of an exceptionally well prepared team with ample experience in the transport of all kinds of cargo. An in-house engineering department guarantees the successful execution of the most complex operations.
- We rely on a worldwide network of highly qualified professionals and co-workers.
- We guarantee the highest degree of efficiency and control over all aspects of our services as cargo agents, as we are leaders in industrial project transportation.
- We are proud to count among our customers leading engineering companies and major industrial groups in Spain. Our extensive experience in oil and gas, industrial plants, power plants, wind farms, mining, construction and so on makes it possible for us to devise customized solutions to meet their demands



INDUSTRIES

- Oil & gas
- Energy
- Renewables
- Civil engineering
- Mining
- Industrial projects
- Off-shore





Hermosilla 30, 2
28001 Madrid - España
Tel.- +34 91 4311363
www.grupoaltius.com